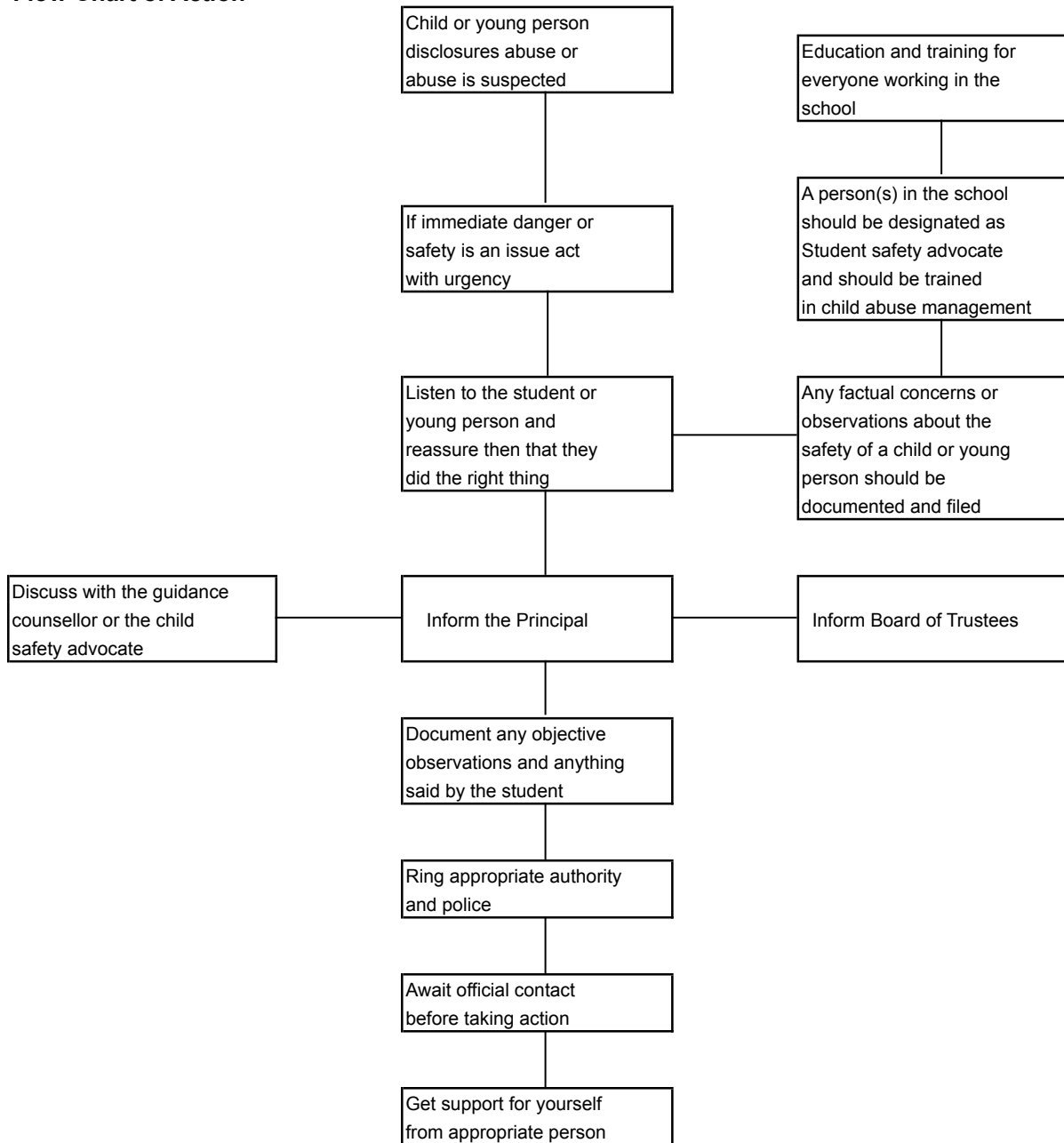


## Reporting Child Abuse - Interagency Protocols

### Flow Chart of Action



**Notes:**

1. Documentation may be subsequently used in court for either side
2. Avoid making judgements - simply record the facts.
3. Interviewing of suspected abuse victims is a specialist procedure and best left to those who are trained in such techniques.
4. The child's advocate should be responsible for ensuring the student's welfare remains paramount.